

910
LIVE



FACT SHEET

Company: 910 Live
Website: www.910Live.com
Address: 910 N. McClintock Rd., Tempe, AZ 85281
Phone: (480) 966-0707

Opened: Spring 2010

Concept:

Located on the site of the famed 90's live music venue Boston's, the newly renovated 910 Live features state of the art sound, LED lighting and professional audio production equipment that showcases the best in local talent, national artists and world class DJs. Whether you're experiencing the indoor shows with plush seating rocking under the stars on our cabana concert patio, 910 Live will accommodate.

910 Live is the result of the owner recognizing a need for intimate venues in Tempe after the loss of Nita's Hideaway and Boston's. While focused on providing a location for music lovers to enjoy live shows, 910 Live music venue is capable of facilitating local, regional and national acts alike.

Atmosphere:

910 Live's modern industrial style features polished concrete floors, brushed metal accents, rolling garage doors which open to the back patio for an indoor/outdoor stage, and a metallic granite topped bar adorned with classic rock decals and dancer poles.

Features:

Located in an entertainment area, away from residential concerns, 910 Live provides a variety of amenities for guests and talent including 3 staging areas, indoor/outdoor VIP areas and indoor/outdoor bars. Valet parking and catering are available upon request. Performers may also enjoy the private green rooms with Wi-Fi internet access, a production office and flat screen television.

Please refer to the technical rider for additional information on the state of the art equipment.

General Managers: Brannon Kleinlein | brannon@910live.com
Jeff Minor | jeff@910live.com
Production/Technical Manager: Troy Boyer | troy@910live.com
Web Designer/Graphic Artist: Rebecca Schuller | rebecca@910live.com



TECHNICAL RIDER

GENERAL PRODUCTION INFO:

- There is a no flash photography policy and all video taping requests must be advanced with 910 Live at least 24 hours in advance. A release or contract must be signed for any video taping, audio recording or photography.
- All photographers and members of the press must obtain clearance from our publicity department.
- All guest-lists are due two hours prior to doors opening on the day of the show.
- 910 Live requires that current stage and lighting plots, input lists, backline and hospitality riders be provided directly to the production manager 3 days prior to the show.
- Dressing room available with shower and private bathroom.

FRONT OF HOUSE (FOH) INFO:

- FOH Console: DigiDesign profile with mix rack and stage rack.
- FOH Processing: EAW UX 8800
- (2) Basis 914LZ - In Room Speakers and Monitors
- FOH Gates/Comps: In Console
- Playback/Record: Latest Pro-Tools HD Bundle with 48 channels.
- Main Speakers: EAW NTL720 Array
- (4) EAW NTS22 Dual 12" Sub Enclosures
- (7) House Surround 8" EAW Avalon Series

MONITORS INFO:

- Wedges: (6) EAW Microwedge
- Fill - Drums: (2) Microsub
- Amps: (4) QSC

MICS & DIGITAL INPUTS INFO:

- Full Professional Mic Package. Shure, Sennheiser and AKG.

DI BOXES:

- Microphones - will supply mic set until purchased

LIGHTING INFO:

- All Led Lighting, No Lighting Heat On Performers
- Lighting Console: Martin Maxxyz Compact
- (27) Martin Intelligence Lighting Fixtures



TECHNICAL RIDER

STAGE DETAILS:

- Back Stage: Available Upon Request
- Case Storage: Outside
- Description: Cement
- Stage Left/ Right Wing: None

STAGE DIMENSIONS:

- Indoor - 17' X 20'
- Outdoor - 22' X 20'
- Outdoor - 40' X 30'

BACKLINE EQUIPMENT INFO:

- Backline Availability per advance with Production Manager

MIC STANDS:

- Full Compliment

DI BOXES:

- Microphones - will supply mic set until purchased

DJ RIG:

- Pioneer DJM-800
- (2) Pioneers CDJ-2000
- (2) Technics SL1210 Turntables
- Bring your own needles and mats
- (1) Rane TTM57SL

For more information contact:

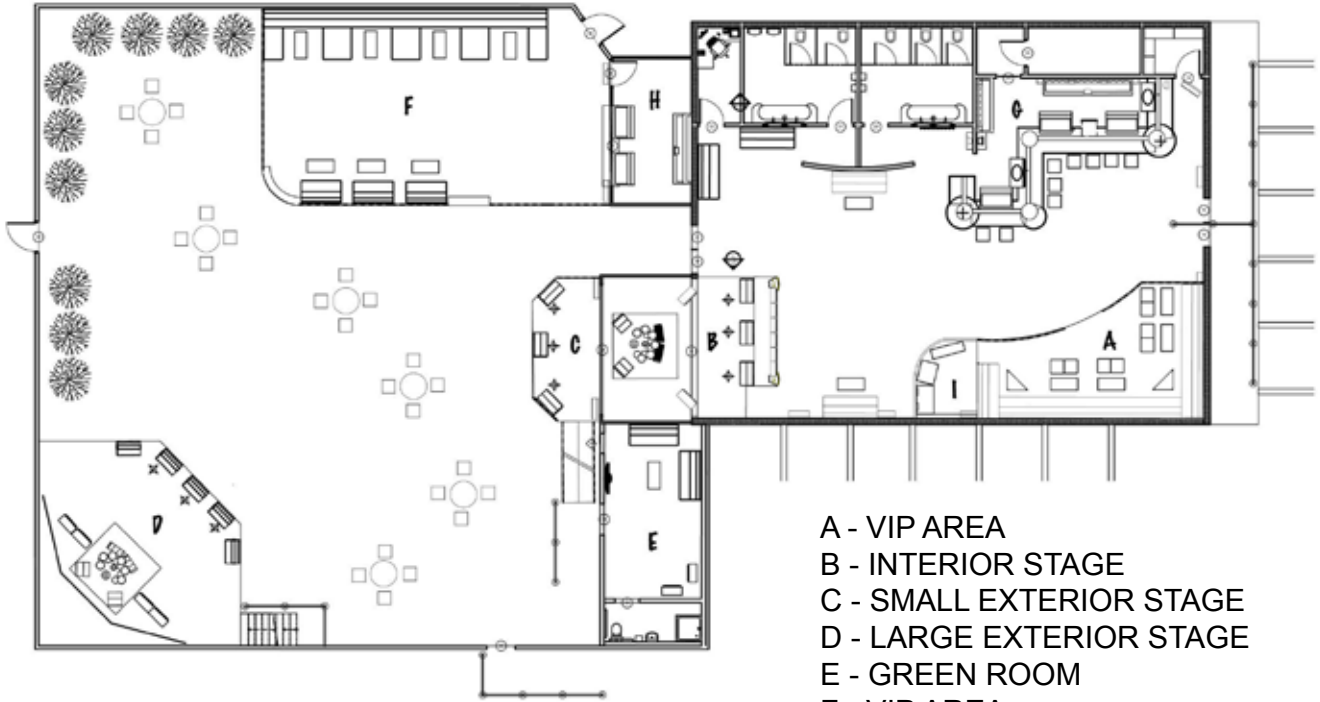
Brannon Kleinlein/ Manager - brannon@910live.com

Jeff Minor/ Manager - jeff@910live.com

Troy Boyer/ Production Manager - troy@910live.com

910 LIVE

MASTER LAYOUT



- A - VIP AREA
- B - INTERIOR STAGE
- C - SMALL EXTERIOR STAGE
- D - LARGE EXTERIOR STAGE
- E - GREEN ROOM
- F - VIP AREA
- G - MAIN BAR
- H - PATIO BAR

rendering by: JT Tillman jt@910club.com
1st FLOOR PLAN
 SCALE: 3/32" = 1'-0"

GALLERY



VIP Area



Sound/DJ Booth



Interior Stage



Exterior Stage



Beer Garden/ Patio



Interior Bar



Exterior Bar



Parking Lot